



You are driving through an entertainment district near a business area in the city. The photograph shows the view from the driver's seat, and you can see a number of vehicles parked on either side of the road. Pedestrians are crossing the road ahead of you. There are pedestrians on the left side of the road, but they have stopped walking and are looking this way.



Driving through an entertainment district during the morning rush hour.

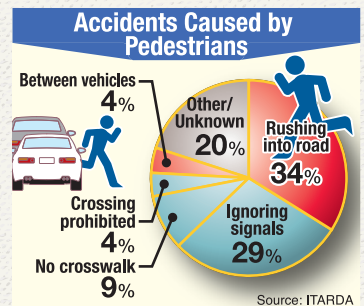
What should you be looking at right now?

ANSWER

You should be watching out for people rushing past the pedestrians waiting on the left.

As you drove down the street, another pedestrian rushed past those waiting for you to pass, and there was almost an accident. It looks like the person was in a big rush, as they were running and talking on their mobile at the same time. At first glance it looks like the pedestrian came rushing out from behind the vehicle, but if you look at the first photo, you will

see that the person was visible just behind and underneath your rearview mirror, running out of a side street. The man's face wasn't visible, so the driver must assume that they aren't looking their way and be able to predict that the possibility that the pedestrian will come running out into the road.



Rushing into the road – the cause of many accidents

During the morning rush hour, people regularly rush out into the road without due care as they make their way to work or school. "Rushing into the road" accidents are the most common accidents where pedestrians are at fault, so when driving through areas near offices or schools, drivers must make sure to keep their speeds down and their eyes on the pedestrians around them.

● Read Nagayama's commentary online. (Japanese only)
Graph: Hideaki Kinjoh
Photography: Norihiro Ochiai