



You're riding along a sidewalk that allows bicycles. As you can see in the photo, you see a woman waiting to cross at the lights, so you have moved to the right in order to pass her and cross the intersection. You can see a bicycle and cars coming from the opposite direction, and a car waiting to turn right at the light.



Your Position



Weather



Time of Day

You're about to go through an intersection on a bicycle.

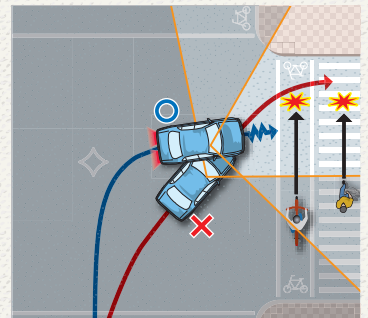
What should you be looking at right now?

ANSWER

You should be keeping an eye on the car waiting to turn right.

Just when you are about to cross the intersection, the car comes from the left and almost strikes you. It is vitally important to realize that the car in the first photo is waiting to turn and that they probably will do so once they see a break in the traffic coming from the other direction. Accidents involving vehicles colliding with

pedestrians or bicycle riders when turning at intersections are not uncommon. Drivers tend to only look forward, particularly when turning right, and they overlook the fact that a bicycle could be coming from behind them. So, keep your speed down and watch what that car turning right is doing.



For the driver in the car turning right

There are often accidents involving cars running into pedestrians or cyclists at crosswalks when turning right, so drivers must always remember to look to their right before turning. Hurrying the turn on the direct path (the X-marked path in the diagram) puts people on the crosswalk into your blind spot, so make sure to make the turn at as much of a right angle as possible to bring anyone crossing the road into view (the O-marked path in the diagram), thereby giving you enough time to stop and let them cross.

Chart: Hideaki Kinjoh
Photography: Norihito Ochiai

