



You are driving on a highway you have never taken before, and the photograph here was taken from the driver's seat. You want to turn right at the upcoming intersection and are in the right lane, but then you notice a traffic sign up ahead that indicates you have to use the underpass to turn right, and so you need to quickly merge onto the left lane.



Your Position



Weather



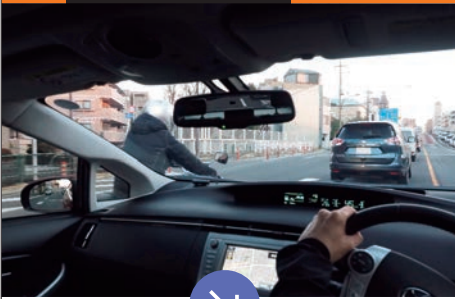
Time of Day

You are about to merge onto the left lane.

What should you be looking at right now?

ANSWER

You should be paying attention to the motorcycle barely visible on your left.



You begin your lane change and nearly come into contact with the motorcycle to your left. Even though the motorcycle wasn't visible in the side mirror, you should have noticed the front of the motorcycle just to the left of the mirror. If

you look closer, you can also see that the motorcycle's light is shining on the back of the car in front of it. Side mirrors have blind spots, so it is always important to turn your head for visual confirmation before a lane change. You need to be even more careful when you need to make a lane change quickly, because your safety check will likely be insufficient.



Be aware on unfamiliar roads.

When driving on unfamiliar roads it is important to check maps ahead of time and set the GPS in advance to ensure a smooth drive. As in the example above, sometimes you have to merge to the left to use an underpass in order to turn right. Also remember that road signs generally are posted well ahead of time — so keep an eye on the road ahead of you to avoid having to make rush decisions.